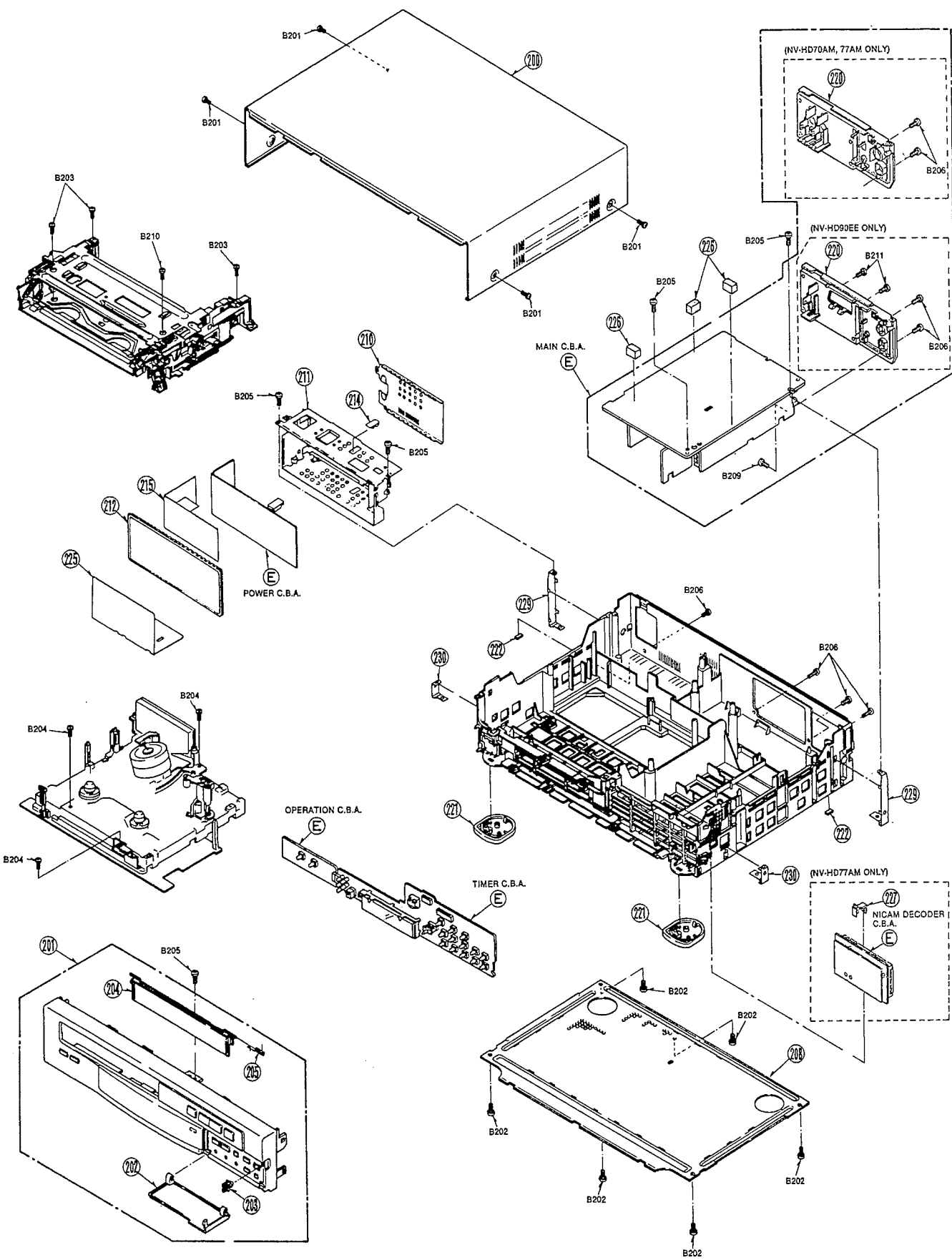






3 CASING PARTS SECTION



Note:1.\* Be sure to make your orders of replacement parts according to this list.  
 2. IMPORTANT SAFETY NOTICE  
 Components identified with the mark (I) have the special characteristics for safety. When replacing any of these components, use only the same type.

Ref.No.	Part No.	Part Name & Description	Pcs	Remarks
200(3)	VGM0980	TOP PANEL	1	
201(3)	VYP5610	FRONT PANEL UNIT	1	NV-HD70AM
201(3)	VYP5613	FRONT PANEL UNIT	1	NV-HD77AM
201(3)	VYP5612	FRONT PANEL UNIT	1	NV-HD90EE
202(3)	VKF2206	DOOR PANEL	1	NV-HD70AM
202(3)	VKF2208	DOOR PANEL	1	NV-HD77AM
202(3)	VKF2207	DOOR PANEL	1	NV-HD90EE
203(3)	VGQ0550	DOOR LOCK PIECE	1	
204(3)	VKF2131	BLINDER PANEL	1	NV-HD70AM/HD77AM
204(3)	VKF2123	BLINDER PANEL	1	NV-HD90EE
205(3)	VMB2521	BLINDER SPRING	1	
208(3)	VKU0374	BOTTOM PLATE	1	
210(3)	VSC3110	POWER SHIELD COVER (TOP)	1	
211(3)	VKA3571	POWER SHIELD COVER (MAIN)	1	
212(3)	VSC2237	POWER SHIELD COVER (BOTTOM)	1	
214(3)	VMO0357	IC HOLDER SPRING	1	
215(3)	VWZ2271	POWER BARRIER	1	(I)
220(3)	VJH0756	I/O JACK PLATE	1	NV-HD70AM/HD77AM
220(3)	VJH0740	I/O JACK PLATE	1	NV-HD90EE
221(3)	VKA0154	LEG	2	NV-HD70AM/HD77AM
221(3)	VKA0157	LEG	2	NV-HD90EE
222(3)	VGQ0122	FOOT	2	
225(3)	VWZ2213	SHIELD BARRIER	1	
226(3)	VWTO506	MAIN C.B.A. SPACER	3	
227(3)	VGQ1362	NICAM HOLDER	1	NV-HD77AM
229(3)	VMP3820	SIDE ANGLE (REAR)	2	
230(3)	VMP3821	SIDE ANGLE (FRONT)	2	
B201(3)	XTW3+10TFZ	SCREW	4	
B202(3)	VHD0059	SCREW	6	
B203(3)	XTV26+8FR	SCREW	3	
B204(3)	VHD0168	SCREW	3	
B205(3)	VHD0773	SCREW	5	
B206(3)	XTV3+12JFZ	SCREW	6	
B209(3)	XTV3+6F	SCREW	1	
B210(3)	XTV26+10F	SCREW	1	
B211(3)	XTN4+10JFZ	SCREW	2	NV-HD90EE
				SERVICE FIXTURES & TOOLS
				VFJ8125H3F VHS ALIGNMENT TAPE(PAL)
				VEK0335 RETAINING RING REMOVER
				(3mm/9mm)
				VEK0329 POST ADJUSTMENT SCREWDRIIVER
				VEK0326 HEX WRENCH SET
				VEK0132 BACK TENSION METER
				VEK27 HEAD CLEANING STICK
				MOR265 MORLYTONE GREASE
				VEK0341 UPPER CYLINDER REMOVER
				VEK0680 WHITE GREASE
				VEK0851 CENTRE FIXING TOOL
				VEK0330 FINE ADJUSTMENT GEAR DRIVER
				VEK0890 6 PIN EXTENTION CABLE
				VEK0944 5 PIN EXTENTION CABLE

Note:1.\* Be sure to make your orders of replacement parts according to this list.  
 2. IMPORTANT SAFETY NOTICE  
 Components identified with the mark (I) have the special characteristics for safety. When replacing any of these components, use only the same type.

Ref.No.	Part No.	Part Name & Description	Pcs	Remarks
300(4)	VQT5598	OPERATING INSTRUCTIONS	1	(I) NV-HD70AM
		(ENGLISH/ARABIC/RUSSIAN)		
300(4)	VQT5778	OPERATING INSTRUCTIONS	1	(I) NV-HD77AM
		(ENGLISH)		
300(4)	VQT5603	OPERATING INSTRUCTIONS	1	(I) NV-HD90EE
		(ENGLISH/GERMAN)		
300(4)	VQT5604	OPERATING INSTRUCTIONS	1	(I) NV-HD90EE
		(POLISH/RUSSIAN)		
302(4)	VJA0376	DIN RF CABLE	1	
303(4)	VJA0713	AC CORD	1	(I) NV-HD70AM/HD77AM
303(4)	VJA0664	AC CORD	1	(I) NV-HD90EE
305(4)	VEQ1574	REMOTE CONTROLLER	1	
307(4)	VJP2974	AC PLUG ADAPTOR	1	(I) NV-HD70AM/HD77AM
308(4)	VSQ0662	SEPARATION ADAPTOR	1	NV-HD70AM/HD77AM
310(4)	VGP3632	DOOR PANEL	1	
311(4)	VKF2115	BATTERY COVER	1	
315(4)	VEK0634	ACCESSORIES PACKING	1	
318(4)	VFN3555	CUSHION (R)	1	
319(4)	VFN3556	CUSHION (L)	1	
320(4)	VFG7388	PACKING	1	NV-HD70AM
320(4)	VFG7537	PACKING	1	NV-HD77AM
320(4)	VFG7387	PACKING	1	NV-HD90EE

# ④ PACKING PARTS SECTION

